

**CRAFT BEER ON TAP BY GLASS**  
**330ML/ 500ML**

---

<b>Belgian wit</b>	<b>325/ 475</b>
<b>Hefeweizen</b>	<b>325/ 475</b>
<b>Apple Cider</b>	<b>325/ 475</b>
<b>Double Stout</b>	<b>325/ 475</b>
<b>Mango Cider</b>	<b>325/ 475</b>
<b>Japanese Rice Lager</b>	<b>325/ 475</b>
<b>IPA</b>	<b>325/ 475</b>

**DRAUGHT BEER ON TAP BY GLASS**  
**330ML/ 500ML**

---

<b>Becks Draught</b>	<b>280/ 425</b>
<b>Bira Blonde Draught</b>	<b>280/ 425</b>
<b>Bira White Draught</b>	<b>295/ 450</b>
<b>Budweiser Draught</b>	<b>295/ 450</b>
<b>Bud Magnum Draught</b>	<b>350/ 495</b>
<b>Hoegaarden Draught</b>	<b>450/ 650</b>

**BOTTLED BEER PINT**

---

<b>Kingfisher Premium</b>	<b>280</b>
<b>Kingfisher Ultra</b>	<b>295</b>
<b>Budweiser</b>	<b>295</b>
<b>Bira White</b>	<b>325</b>
<b>Budweiser Magnum</b>	<b>375</b>
<b>Corona</b>	<b>450</b>
<b>Hoegaarden</b>	<b>450</b>



**BAR MENU**

## SIGNATURE COCKTAILS

---

### Elderflower Gin Sour 425

Gin mixed with muddled elderflower, elderflower syrup, lime juice with a creamy layer of egg white

### Deep Blue Ocean 425

Vodka with blue curacao and freshly squeezed lime juice, mixed with ice and a squeeze of orange

### GNT 425

Gin topped with tonic water with a squeeze of orange and added whole black pepper, finished with a fresh blood orange wedge and rosemary. A twist to a classic

### Watermelon Vodka Martini 425

Vodka mixed with fresh watermelon, a dash of watermelon puree, orange juice, finished with a wedge of watermelon

### The Essence of Life 425

Gin mixed with freshly muddled mint leaves, fresh lime juice, simple syrup and ice with fresh mint leaves. A refreshing take on an old classic

### Blood Orange Sour 425

Gin mixed with muddled grapefruit, syrup, lime juice and ice served with a foamy layer of egg white

### A Summer Evening 425

White rum with freshly squeezed lime juice, fresh pineapple juice, fresh peach, honey and mint

### Pink Paloma 425

Gin mixed with muddled hibiscus & grapefruit, simple syrup and lime juice

### Blueberry Basil Martini 425

Vodka mixed with freshly muddled blueberries & basil, blueberry puree, freshly squeezed lime juice and ice

### Cucumber Basil Gimlet 425

Gin mixed with freshly muddled cucumber and basil, cucumber syrup, freshly squeezed lime juice and ice

### The Espresso Martini 450

Vodka and Kahlua mixed with a medium roast shot of espresso and ice, finished with coffee beans

### Twisted Old Fashioned 550

Jim Beam with Angostura bitters, sugar, a squeeze of orange, smoked with burnt wood and rosemary finished with orange

### Bourbon Sour 550

Jim Beam with freshly squeezed lime juice, simple syrup, creamy egg white, shaken twice and finished with Angostura bitters

### Spiced Kiwi Margarita 550

Tequila with freshly muddled kiwi, kiwi puree, simple syrup and freshly squeezed lime finished with a salt rim

## THE CLASSICS

---

### Cosmopolitan 425

### Mojito 425

### Hot Toddy 425

### Dry Martini 425

### Pina Colada 425

### Whiskey Sour 425

### Margarita 550

### Negroni 575

### Aperol Spritz 650

### Mimosa/ Bellini 795

## LONG ISLAND ICE TEA

---

### Classic LIIT 650

### Cranberry LIIT 650

### Jager LIIT 750

### Red Bull LIIT 750

*You can also ask your server to create your cocktail in your choice of spirit, charges will be the same as that for a 60ml serving of the particular selection. See next page.*



## WHISKEY DOMESTIC (30ML)

---

Oaksmith Gold	225
William Lawson	250
VAT 69	295
Teachers Highland	295
Black & White	325
Black Dog	350
Jim beam	350
Teachers 50	350

## WHISKEY IMPORTED (30ML)

---

Ballantines	350
JW Red Label	350
Dewars White Label	350
Jameson	375
Jack Daniels	475
Chivas Regal (12 Y)	495
JW Black Label	495
JW Double Black	650
JW Blue Label (Bottle)	45,000

## SINGLE MALTS (30ML)

---

Indri	650
Glenlivet (12 Y)	650
Talisker (10 Y)	675
Singleton (12 Y)	695
Glenfiddich (12 Y)	695
Laphroaig (10 Y)	750

## VODKA (30ML)

---

Smirnoff	250
Smirnoff Flavours	250
Skyy Vodka	295
Ketel One	325
Absolut	325
Absolut Flavours	325
Grey Goose	595
Belvedere	595

## GIN (30ML)

---

Greater Than	250
Gordons	275
Tanqueray	325
Stranger & Sons	325
Beefeater	325
Bombay Sapphire	350
Hendrick's	675
Monkey 47	675
Roku	675

## TEQUILA (30ML)

---

Don Angel	375
Sauza Silver/ Gold	375
Camino Blanco	375
Camino Gold	375
Josh Cuervo Silver	375
Patron Silver	750
Don Julio Blanco	750

## RUM (30ML)

---

Old Monk	200
Bacardi Black	225
Bacardi Superior	275
Bacardi Limon	275
Cabo Bay	350
Malibu	395

## LIQUEURS & COGNAC (30ML)

---

Martini Rosso	250
Dry Martini	350
Peach Schnapps	295
Kahlua	325
Campari	325
Bailey's Irish Cream	425
Sambuca	475
Jagermeister	525
Hennessy VS	675
Hennessy VSOP	950



## WHITE WINES (GLASS/ BOTTLE)

---

Fils Chablis AOC (France)	6750 (B)
Two Oceans Chardonnay	5750 (B)
Yellowtail Chardonnay	4750 (B)
Hardy's Chardonnay	750/ 3650
Jacobs Creek Chardonnay	750/ 3650
Source- Sauvignon Blanc	550/ 2450
Sula Chenin Blanc	450/ 1950
Fratelli Chardonnay	450/ 1950

## RED WINES (GLASS/ BOTTLE)

---

Chateauneuf du pape	18,500 (B)
Fils Chablis AOC (France)	6750 (B)
Two Oceans Shiraz	5750 (B)
Yellowtail Shiraz	4750 (B)
Hardy's Cabernet Merlot	750/ 3650
Jacobs Creek Merlot	750/ 3650
Source- Cab Sauvignon	550/ 2450
Sula Cabernet Shiraz	450/ 1950
Fratelli Merlot	450/ 1950

## ROSÉ WINES (GLASS/ BOTTLE)

---

Mateus Rosé (Portugal)	5500 (B)
Source- Grenache Rosé	550/ 2450
Sula Zinfadel Rosé	450/ 1950

## SPARKLING WINES/ CHAMPAGNE (GLASS/ BOTTLE)

---

Dom Perignon (France)	49,500 (B)
Moet Chandon Imp (France)	17,500 (B)
Chandon Brut (India)	850/ 4250
Chandon Rosé	850/ 4250
Sula Brut	750/ 3450

## SANGRIA (BY GLASS/ 5 GLASS PITCHER)

---

Red Wine Sangria (Sula)	450/ 1950
White Wine Sangria (Sula)	450/ 1950
Rosé Wine Sangria (Sula)	550/ 2450
Red Wine Sangria (JC)	650/ 2950
White Wine Sangria (JC)	650/ 2950

## SHOTS

---

<b>Jagerbomb</b> Jagermeister & redbull	595
<b>Grenade</b> Jagermeister, Tequilla, Red bull	595
<b>B52</b> Kahlua, Bailey's, Tri sec	495
<b>The Mexican</b> Tequilla, sambuca, tobasco	450
<b>Kamikaze</b> Vodka, Tri Sec, Lime juice	350
<b>Absolut Flavoured Shots</b> Cranberry, passionfruit, peach	295

## BREEZERS (PINT)

---

Cranberry	350
Jamaican Passion	350



## NON ALCOHOLIC

---

**Shirley Temple** 280  
Grenadine, lime, ginger ale, cherry

**Orange Mule** 280  
Orange, lime, orange juice, basil, ginger ale

**Mango Basil Punch** 280  
Mango crush, vanilla ice cream, basil, mango juice

**Roy Rogers** 280  
Grenadine with cola, ice, topped with a cherry

**Grapefruit Lemonade** 280  
Grapefruit juice, lemon juice, ice, syrup

**Red Bull Mojito** 325  
Lime juice, mint, sugar, ice, topped with red bull

## CLASSICS

---

**Virgin Mojito** 280

**Virgin Pina Colada** 280

**Green Apple Mojito** 280

**Ice Tea (Lemon/ peach)** 280

**Fruit Punch** 280

**Virgin Hot Toddy** 280

## COLD PRESS FRESH JUICES

---

**Orange** 280

**Pineapple** 280

**ABC** (Apple, Beetroot, Carrot) 280

**Carrot** 180

**Watermelon** 180

**Detox** (Carrot, Beetroot, Celery, Ginger) 180

## COFFEE AND TEA

We Use Medium Roast 100% Arabica Coffee Beans

---

**Cappuccino** 180

**Americano** 150

**Espresso/ Doppio** 120/ 180

**Caffè Latte** 180

**Iced Coffee** 150

**Extra Espresso Shot (add on)** 60

**Green Tea** 150

## FRAPPÉ

---

**Cold Coffee Frappé** 280

**Mocha Frappé** 280

**Oreo Frappé** 280

**Kit Kat Frappé** 280

## BEVERAGES

---

**Red Bull** 280

**Ginger Ale/ Tonic Water** 150

**Canned Juices (by glass)** 150

**Fresh Lime Soda/ Water** 150

**Aerated beverages (by glass)** 150

**Diet Pepsi** 150

**Soda** 60

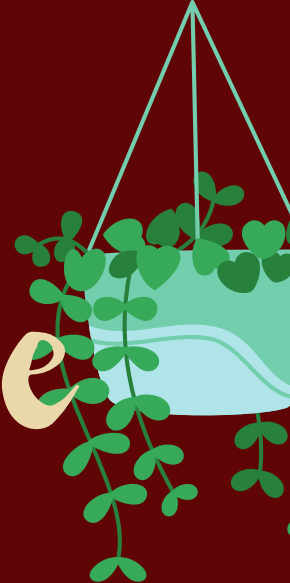
**Bottled water Himalayan** 110

**Soft drink mixers** 75



# Happy Hours Buy 2 Get 1 Free

Mon to Fri 12pm to 7pm



## CRAFT & DRAUGHT



Belgian Wit	325
Hefeweizen	325
Apple Cider	325
Dark Stout	325
IPA	375
Budweiser Magnum	350
Budweiser	295
Bira White	295
Bira Blonde	280
Becks	280

## SPIRITS

Oaksmith Gold	225
Teachers Highland	295
Ballantines	350
Red Label	350
Jameson	375
Absolut	325
Smirnoff	250
Old Monk	200
Bacardi Black	225
Bacardi Superior / limon	275
Gordons	275
Greater Than	250

## WINES BY GLASS

Sula Chenin Blanc	450
Sula Cabernet Shiraz	450
Sula Zinfadel Rosé	450
Sula Brut	750

## CLASSIC COCKTAILS

Cosmopolitan	425
Mojito	425
Hot Toddy	425
Pina Colada	425
Whiskey Sour	425
Margarita	550
Negroni	575
Mimosa	795
Bellini	795

## MOCKTAILS

Offer Valid on all Signature and  
Classic Mocktails

# osteria

# BOTTLES

## WHISKEY

---

Black & White	7250
Black Dog	7250
Jim beam	7250
Teachers 50	7800
Ballantines	7800
JW Red Label	7800
Dewars White Label	7800
Jameson	7800
Jack Daniels	10500
Chivas Regal (12 Y)	10500
JW Black Label	10500
JW Double Black	14250
JW Blue Label (Bottle)	45,000

## SINGLE MALTS

---

Indri	14250
Glenlivet (12 Y)	14250
Talisker (10 Y)	14250
Singleton (12 Y)	15450
Glenfiddich (12 Y)	15450
Laphroaig (10 Y)	16500

## VODKA

---

Ketel One	7250
Absolut	7250
Grey Goose	13250
Belvedere	13250

## LIQUEURS & COGNAC

---

Bailey's Irish Cream	9500
Sambuca	10500
Jagermeister	11750
Hennessy VS	15250
Hennessy VSOP	21250

## GIN

---

Greater Than	5950
Gordons	6250
Tanqueray	7250
Stranger & Sons	7250
Beefeater	7250
Bombay Sapphire	7850
Monkey 47	10500
Hendrick's	15250
Roku	15250

## RUM

---

Bacardi Superior	6250
Bacardi Limon	6250
Cabo Bay	7850
Malibu	8750

## WINES & CHAMPAGNE

---

Please refer to the wines section  
in the menu

PLEASE NOTE: THIS IS AN  
IN- HOUSE OFFER AND CANNOT  
BE CLUBBED WITH THIRD PARTY  
DISCOUNT OFFERS. MIXERS ARE  
CHARGED EXTRA.

